

# EasyTouch RV™

# 356

## Quick Start Guide

Please visit our website for complete manuals, guides, and information on setup, operation, and troubleshooting

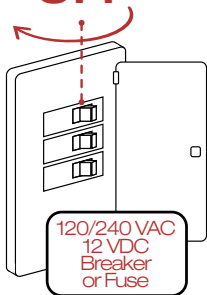
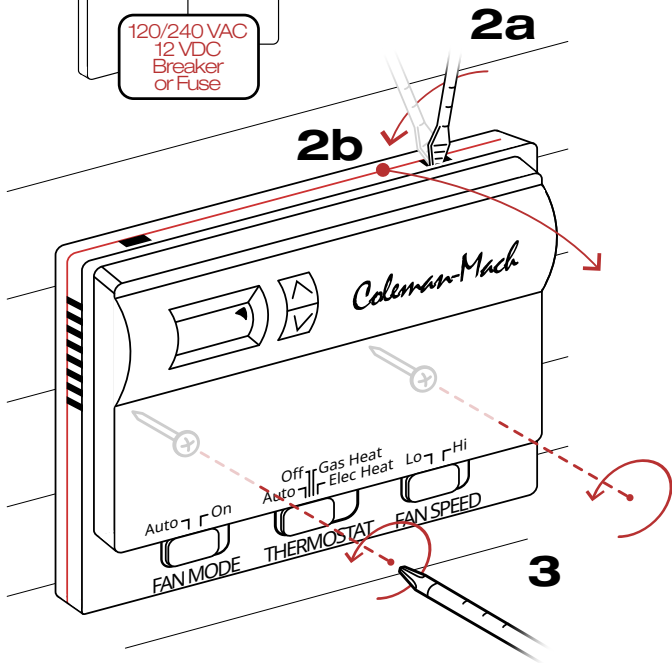


[www.micro-air.com/kb\\_easytouch\\_rv.htm](http://www.micro-air.com/kb_easytouch_rv.htm)



**MICRO-AIR**



**1****OFF****2a****2b**

4

Plugs?

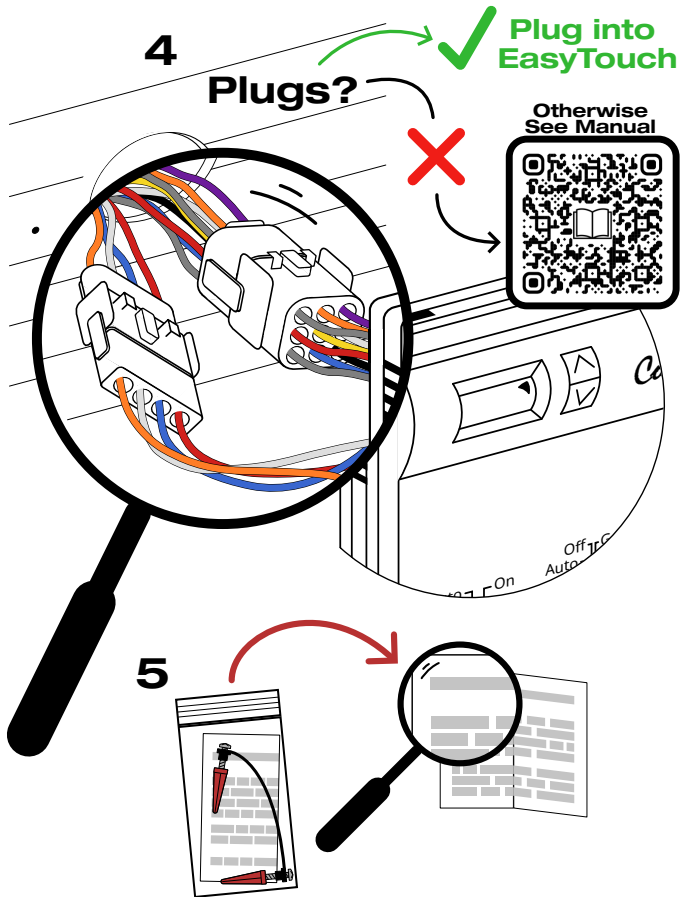
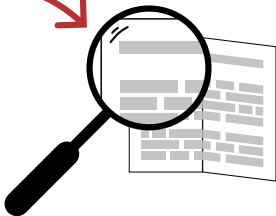
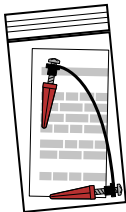
Plug into  
EasyTouch



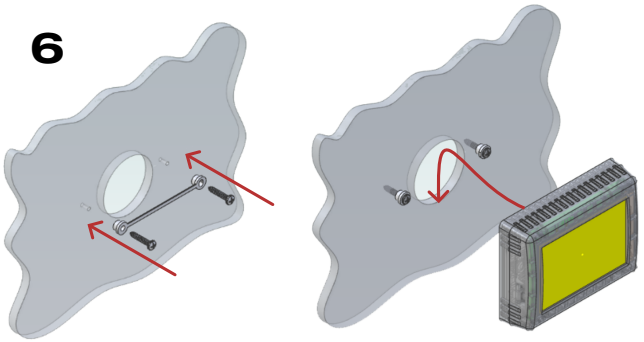
Otherwise  
See Manual



5

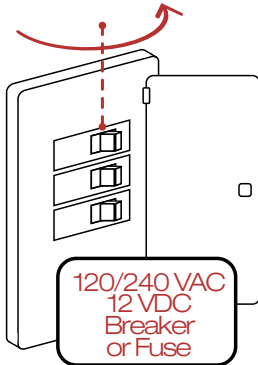


**6**

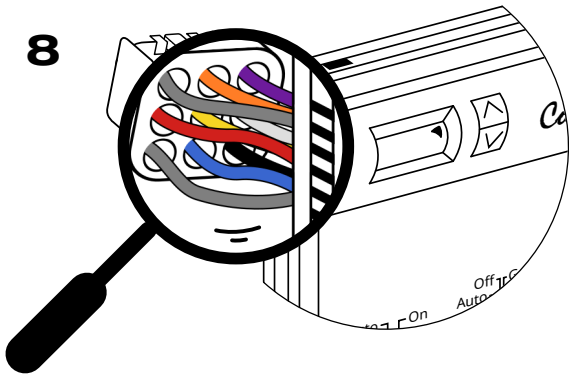


**7**

**ON**



8

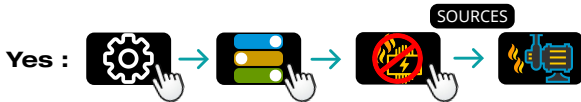


## Have Green Wire?



No : Leave Default

## Have White Wire with Black Stripe?

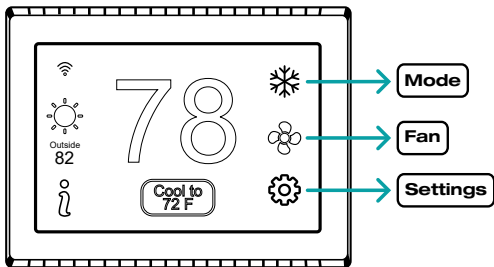


No : Leave Default

9



# Get Started



## Power



## Fan Speed



## Cool



## Heat

