

EasyTouch RV
353
Operating Manual
Revision 1.2

Table of Contents

EasyTouch RV 353 Models and Compatible Replacements.....	3
Installing the Thermostat.....	4
Safety	4
Removing the Old Thermostat.....	4
Wiring the New Thermostat	4
Re-apply Power	5
Mounting the Thermostat	6
Initial Setup Instructions	7
Operating the Thermostat	8
Main Screen	8
Operational Modes	10
Local Weather and Local Time.....	12
Status Messages.....	12
Settings Screens	13
Schedule Screens	16
Create and Enable a Schedule.....	17
Smart-Device Application Features	18
Restart Thermostat	18
Calibrate Touchscreen	18
Check for Updates.....	18
Notifications.....	18
Edit Wi-Fi Settings or Connect to Wi-Fi.....	18
Appendix A: Working Wirelessly.....	19
First Connection Steps	19
Adding a Thermostat to Your Account.....	19
Connecting to a New Wi-Fi Network	20
Updating The EasyTouch RV Thermostat.....	20
Appendix B: Troubleshooting.....	21
Wi-Fi Troubleshooting.....	21
EasyTouch RV Knowledge Bank – More Information	21

The EasyTouch RV 353 model is a touchscreen thermostat with Wi-Fi and Bluetooth control. These thermostats were designed to directly replace Furrion™ branded single-zone and multi-zone OEM thermostats. Please use section *EasyTouch RV 353 Models and Compatible Replacements* to make sure that this model is right for you.

EasyTouch RV 353 Models and Compatible Replacements

EasyTouch RV 353 can be purchased in a black or white finish. *Table 1* describes the two available part numbers for purchase.

Model Number	Color
ASY-353-X01	Black
ASY-353-X02	White

Table 1

Table 2 lists the known Furrion™ OEM model numbers that can and cannot be used with EasyTouch RV 353. The table is not exhaustive so if your thermostat is not listed, please contact Micro-Air at <https://www.micro-air.com/SupportRequest> to verify if this is the correct model for your application. Thermostat model numbers can be found in your original user’s manual or on a sticker on the backplate. Note that a “ * ” character means any characters in those positions are a match.

Compatible Replacements	Incompatible Replacements
FACW12SA*	C-FWH09A-001 (Water Heater)
FACW12PA*	FACT11MA* (Manual Knobs)
FACW12ZA*	
FACW10SA*	
¹ FACW10ESSA*	

Table 2

*1: EasyTouch **must** have software version 1.0.5.2 or greater to be compatible. If you have this thermostat and EasyTouch needs to be updated, wire up the thermostat and initiate a software update. See section Updating The EasyTouch RV Thermostat for details.*

Installing the Thermostat

Safety

First, it is recommended to remove both AC and DC power from your system. Unplug your RV from shore power and turn off any converters or generators to remove AC power. Open your 12-volt DC bus breaker or fuse to de-energize your thermostat. This greatly reduces the chance of any harmful electrical discharge, as well as preventing accidentally opening a fuse.

Removing the Old Thermostat

The OEM thermostats have a front assembly that detaches from a back plate. Rotate the thermostat counter-clockwise to free the front assembly from the backplate. The front assembly will have 4 wires attached to it by a screw terminal block. Take a picture of the wire colors as they enter their screw terminals on the front assembly, to use as a reference later. Try to capture the wire names as well, which are labeled at the base of the screw terminals. You can also write in *Table 3* later in this section to record what color wires have what name.

The backplate is attached to the wall by 2-4 mounting screws; remove them to remove the backplate from the wall.

Wiring the New Thermostat

EasyTouch RV will come with 4 wires to make the appropriate connections. Micro-Air will also provide slide in, lever operated connectors to make your wire connections to the OEM wires coming from the wall. *Table 3* shows how the EasyTouch RV wires will interface with the existing wires. Fill in the OEM wire color column of the chart (along with a picture saved elsewhere) to have a recorded wiring reference.

Table 3 – Wire Color Chart

OEM Wire Color (Provided to write in your own color)	OEM Wire Label	Matching EasyTouch Wire Color	Function
	A	Blue/White Stripe	Communication
	B	Purple	Communication
	+12V	Red	(+) 12 VDC Power
	GND	Green	(-) 12 VDC Power

Once you know which wires match to which, begin by using a small flathead screwdriver (not provided) or similar to loosen a wire's associated screw terminal. Slide the wire out of the terminal and out of the backplate. Ensure that about ½" of insulation is stripped from the end of the wire. Use wire strippers (not provided) or similar to remove the insulation if needed. Open both levers of a connector and fully insert this wire in one end and close the associated lever. Do the same to the matching EasyTouch RV wire. Do this for all four wires.

Warning: Be confident that you are making the right wire connections. Connecting the wires incorrectly may damage the EasyTouch RV thermostat. Please contact Micro-Air if you are unsure.

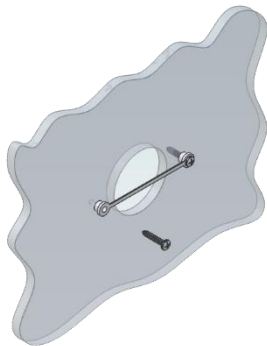
Re-apply Power

Restore DC power and the thermostat screen should light up and boot into the main menus. Restore AC power so that your appliances can run again. Move on to the section *Mounting the Thermostat*, or the section *Initial Setup Instructions* and mount the thermostat later.

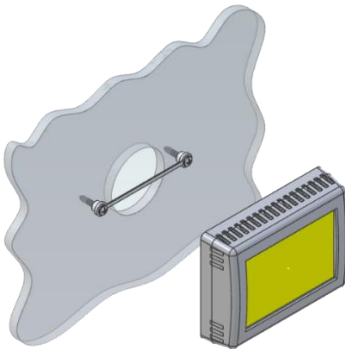
Mounting the Thermostat



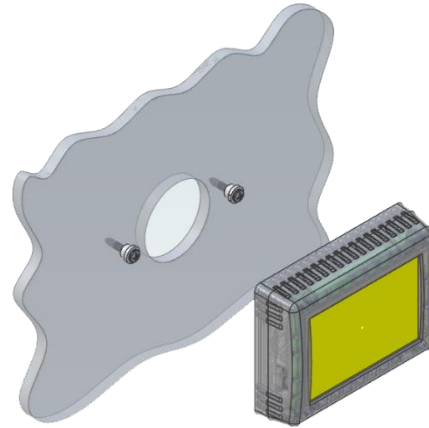
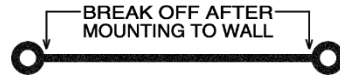
Step 1: Locate the mounting buttons horizontally across the hole with the smaller diameter against the wall.



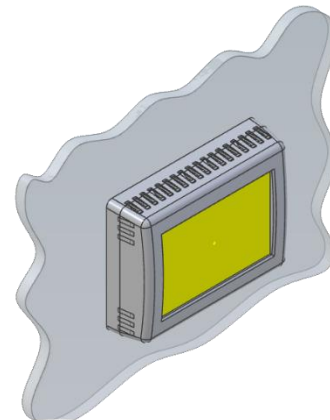
Step 2: Screw in one screw and level the buttons so the display will be straight when installed.



Step 3: Screw in second screw making sure the two buttons remain level.



Step 4: Remove mounting tab before mounting on the wall.



Step 5: Aligning the buttons with the holes in the back of the display. Press the display against the wall and gently slide the display down to lock it in place.

Initial Setup Instructions

The thermostat must know what is available in the system to control. This is found automatically from the A/C control boards in the ceiling. There is no special software configuration needed to begin setting desired operation. See section *Operating the Thermostat* for getting started.

Connecting Remotely

EasyTouch RV can be operated entirely by the touchscreen, however you can also communicate, monitor, and modify operation of it wirelessly using the EasyTouch RV application. Some extra features will require a wireless connection and is described in their sections. See *Appendix A: Working Wirelessly* for details.



EasyTouch RV App icon

Operating the Thermostat

Main Screen

This screen is where most time is spent using the thermostat. This screen allows you to set and monitor the desired operation of the thermostat and is shown in *Figure 1*.

(1) Inside temperature

This is the temperature reading for the space that the thermostat is trying to temper, determined by a local sensor. “Inside” means it is using a sensor inside the thermostat. “Inside(R)” indicates that a Remote sensor is in use. Whichever is in use, it cannot be changed to the other.

(2) Local Weather

This icon indicates the local weather at the last time weather information was received. Tap the icon for more detailed weather information. See the *Local Weather and Local Time* section for more details.

(3) Status Tray

Various icons may be here to indicate active operations.

The Wi-Fi indicator shows the state of the thermostat’s Wi-Fi connection. No icon means no connection to an internet enabling device. Red means it is connected to an internet enabling device but does not have internet. Green means it is connected to the internet. The number of bars indicate strength. See the *Connecting to a New Wi-Fi Network* for more details.



Wi-Fi Indicator

The Schedule icon here means that the created schedule is active and will change operation on that schedule. This is turned on and off in the Settings screens. See section *Schedule Screens* for more details.



Schedule Active

(4) Status Message

Various messages may be shown here to indicate active operations. See the *Status Messages* section for potential messages and their meanings.

(5) Temperature Set Point Adjust

Raise and lower the temperature set-point using the red and blue arrows. This sets the desired temperature for the space based on the operating mode. All modes are listed in the (7) *Operational Mode* section.

(6) System Power

Use the power button to turn the selected zone on or off. Button is red for off and green for on.



Power

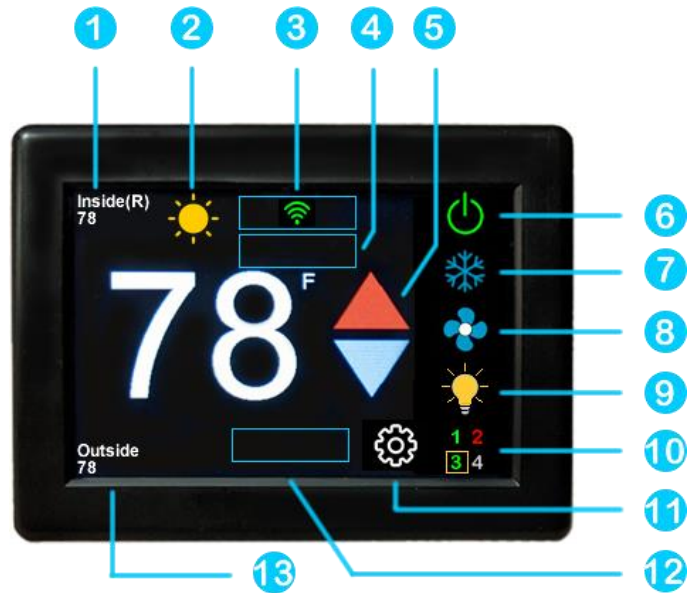


Figure 1 – Main Screen

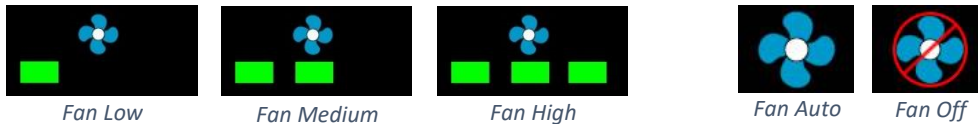
(7) Operational Mode

Pressing the mode button changes the current operating mode depending on what is available in your system. All possible modes are listed below. See the *Operational Modes* section for more details.



(8) Fan Speed

Pressing the fan button selects how the fan will operate in conjunction with the (7) *Operational Mode*. Fans with green bars are manually always-on regardless of heating or cooling, with number of bars indicating speed. Fan Auto turns the fan on and off with a cooling or heating cycle.



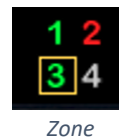
(9) Mood Lighting

Pressing the mood lighting button will take you to a new page where you can select the lighting around the A/C plenum. Tap the color or “off” for the associated light setting. First, choose the zone you want to make a change in by using the (10) *Zone Selection* button. Mood lighting is optional hardware that some systems may not have, where this setting will do nothing. Micro-Air cannot assist with acquiring mood lighting hardware.



(10) Zone Selection and Zone Status

The selected zone is shown by the yellow box. Tap this button anywhere to cycle through the available zones in order. The changes you make on the main screen will apply to the selected zone. *Table 4* describes what a zone color means. Micro-Air cannot assist with adding zones, however when installed they are found automatically and dynamically.



Color	Meaning
Green	Normal Operation
Red	See zone’s (4) <i>Status Message</i>
Gray	No zone communicating or available

Table 4 - Zone Number Color Meaning

(11) Settings

Pressing the settings button will change the screen to the settings screen to allow additional configurations. See section *Settings Screens* for more details.



(12) Additional Status Tray

Various icons may be here to indicate active operations. Cooling modes will show the “Freeze” sensor reading. This is the temperature sensor on the indoor coil, which the A/C uses to cool the space. This can be useful for diagnostic purposes to ensure your system is running correctly.

(13) Outside Temperature

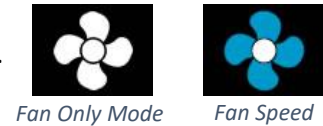
This is the temperature reading for your local area that is retrieved over the thermostat’s internet connection and is part of the (2) *Local Weather* information.

Operational Modes

All modes operate the overhead fan and/or a heating or cooling cycle based on the current heating or cooling set-point, relative to the inside temperature.

Fans and Fan Only Mode

This mode lets the fan to operate based on the chosen (8) *Fan Speed*. This will circulate the air without operating any heating or cooling cycles.



Cool Only Mode

This mode only runs a cool cycle to maintain the cooling set-point in the space. Set the (7) *Operational Mode* button to Cool Only and the desired (8) *Fan Speed*, where behavior will then be based on *Table 5*. A time delay of approximately three minutes occurs before a cooling cycle begins. This allows pressure to equalize in the system to prevent compressor damage.



Environment (°F)	Cycle Operation	Auto Fan Operation
Inside \leq (Setpoint + 1°)	None	Off
Inside 2° Above Setpoint	Cooling Cycle Begins	On Low
Inside 3°- 5° Above Setpoint	Cooling Cycle Continues	On Medium
Inside 6° Or More Above Setpoint	Cooling Cycle Continues	On High
Inside Returns \leq Setpoint	Cooling Cycle Terminates	Runs 30 More Seconds, Off

Table 5 - Cool Only Mode Operation

Note: *Table 5* operation may be different based on the Gap settings. See section *Temperature Gap (Hysteresis)* for details.

Furnace Only or Aqua Only Mode

This mode only runs an auxiliary heating cycle to maintain the heating set-point in the space. Set the (7) *Operational Mode* button to Furnace Only or Aqua Only and the desired overhead (8) *Fan Speed*, where behavior will then be based on *Table 6*. Furnace fan speed is not configurable from the thermostat. See section *Furnace/Aqua Icons* for details on the auxiliary heating icon.



Environment (°F)	Cycle Operation	Auto Fan Operation
Inside \geq (Setpoint - 1°)	None	Off
Inside 2° Below Setpoint	Auxiliary Heat Cycle Begins	On Low
Inside 3°- 5° Below Setpoint	Auxiliary Heat Cycle Continues	On Medium
Inside 6° Or More Below Setpoint	Auxiliary Heat Cycle Continues	On High
Inside Returns \geq Setpoint	Auxiliary Heat Cycle Terminates	Runs 30 More Seconds, Off

Table 6 - Furnace Only Mode Operation

Note: *Table 6* operation may be different based on the Gap settings. See section *Temperature Gap (Hysteresis)* for details.

Dry Mode

This mode attempts to remove humidity from the space using a set algorithm. *Table 7* describes this algorithm.

Environment	Cycle Operation	Fan Operation
Inside ≤ Setpoint	Compressor ON for 10 minutes and OFF for 6 minutes	Always Low
Inside > Setpoint	Compressor ON	

Table 7 - Dry Mode Operation

Auto Modes

This mode will automatically switch between heating and cooling cycles as needed. Their operation will be the same as their “only” mode counterparts described earlier in the *Operational Modes* section. Auto modes will have their own “dual” set-points that are separate heating and cooling set-points. No heating or cooling cycles will occur when the inside temperature is between the set-points.

This can be useful when setting a higher day-time cooling temperature and lower night-time heating temperature. It can also be used to control the temperature extremes when you are away from the RV. *Figure 2* shows how the main screen will look in auto mode.

Note: Auto mode is subject to Gap operations. See section *Temperature Gap (Hysteresis)* for more details.

(1) Auto Mode Set-Points

Press the set-points to toggle between which set-point you have selected. A blue square will show around the one you have selected. The upper set-point is for cooling and the lower set-point is for heating.

(2) Set-Point Adjustment

Use the up and down arrows to change the selected set-point value.



Auto Mode



Figure 2 - Auto Mode Main Screen

Local Weather and Local Time

Local weather is displayed on the main screen and shown visibly in section (2) *Local Weather* under section *Main Screen*. Tapping the button will reveal more detailed weather information of the last received weather data. The local temperature is displayed in the lower left corner of the main screen, as shown in section (13) *Outside Temperature*.

An internet connection and a valid location saved on the thermostat are required to retrieve weather data. Local time data requires saved valid location data. Location is saved in the thermostat when a Bluetooth connection is made from a smart device with its location services enabled. The location in the thermostat is updated when a subsequent Bluetooth connection is made with a different smart-device location than the one saved. Location is preserved through power losses or device restarts.

New weather data is retrieved when there is a screen press or when a connection from a smart device is made, along with the above prerequisites.

Time is pulled in when a Bluetooth or Wi-Fi connection is made from the app. Also, an internet connection on the thermostat will grab the time so long as there is a valid saved location. If power is interrupted or the device is restarted, it will go out to the internet to grab the current time when the internet connection is re-established, without app interaction.

Status Messages

Some messages may be displayed on the main screen as shown in section (4) *Status Message* under *Main Screen*. Table 8 shows the potential messages and their meaning.

Message Text	Description
INDOOR OVER	The room sensor connected to the A/C control board has failed and is reading outside the normal operating range. It must be serviced or potentially replaced by an appropriate Furrion™ room sensor.
INDOOR UNDER	
NO ZONE RESPONSES	The thermostat is not hearing any zones (single-zone or multi-zone) over the communication wires. Press the <i>Reset All</i> button in the <i>Settings Screens</i> to initiate a new zone scan. Ensure that the “A” and “B” wires are installed correctly and not loose or reversed. See section <i>Wiring the New Thermostat</i> for more details.
LOW DC VOLTS	The A/C control board has sensed that the DC voltage level is less than 10.5. Ensure your batteries are changed up, or your RV may need servicing.

Table 8 - Status Message Descriptions

Settings Screens

The settings screens allow for further configuration and control of the thermostat. It is a paged system that you can navigate through to see all available settings. Each setting button can be tapped to configure the related settings. **Note: Not all settings may be available depending on your EasyTouch RV model. If you do not see the graphic then it is not available for your system.**



Settings Button

Tap the settings button as shown in section (11) *Settings* under *Main Screen* to view them.

Navigation

Use these buttons to flip through all the available settings or return to the main screen.



Previous Settings Page



Back to Main



Next Settings Page

System Help

This screen displays a QR code that can be scanned to provide information about thermostat operation and troubleshooting from the Micro-Air website. It also shows the current thermostat firmware revision and the thermostat serial number.



Help Button

Day/Night Mode (Screen Saver)

Tap this icon to switch between Day or Night mode. Day mode will dim the display down to the Sleep Level set in the *Display Brightness* settings, after 30 seconds of no screen presses. Night mode will turn the backlight completely off after 30 seconds of no screen presses. The display will brighten again after a screen press to the Active Level set in the *Display Brightness* settings.



Day Mode



Night Mode

Display Brightness

This screen allows you to set the Active and Sleep brightness levels that are used by the *Day/Night Mode (Screen Saver)* settings. Tap the associated up and down arrows to change their level.



Brightness Button

Schedule – Edit, Enable or Disable

There are two Schedule buttons with sub-writings “Schedule” or “Enable/Disable”. Tap the enable/disable button to turn the schedule on or off. Tap the schedule button to modify the schedule. See section *Schedule Screens* for more details.



Schedule Button

Wi-Fi Information

This screen allows you to monitor the state of your Wi-Fi connection to the thermostat. SSID and Password fields shows the saved credentials that the thermostat is always attempting to find and connect to. Tap the password field to reveal the password.



Wi-Fi Button

The Router, Strength, and Internet fields show the state of the Wi-Fi connection. The MAC address of the thermostat is also shown at the bottom. See section *Connecting to a New Wi-Fi Network* for more details about using Wi-Fi.

Bluetooth (Account) Password Reset

This screen is used to reset the saved Bluetooth password in the thermostat. This is the password that must match your EasyTouch RV app account to make remote connections. Only one account can have access to the thermostat. Use this whenever you reset the password to your app account to regain remote access to the thermostat.



Bluetooth Password Reset

Temperature Reading Adjustment

This setting allows you to calibrate the Inside temperature reading with an offset. For example, if the inside temperature reads 72°F (22.2°C) and you feel it is 75°F (24°C), you can use the up and down arrows on this page to increment the offset to +3°F (+1.8°C).



Temperature Reading Adjustment

Temperature Gap (Hysteresis)

This setting determines the difference in temperature required between setpoint and inside temperature before a heating or cooling cycle will begin. This is helpful to prevent short cycling in large spaces or spaces with high thermal loss, by running a cycle for effectively longer amounts of time. This offset is applied to all logic that involves setpoint operations. Tap the Zone button on the page to choose which zone to apply the gap settings to. See *Table 9* for an operational example.



Temperature Gap Button

Inside Temperature (°F)	Heating Setpoint (°F)	Heating Gap Setting (°F)	System Operation
69	69	4	None
66			None
65			Heating Cycle Begins
67			Heating Cycle Continues
69			Heating Cycle Terminates

Table 9 - Temperature Gap Operational Example

Measurement Units

This setting determines how to display temperatures on the thermostat. Tap the Units button to toggle between Fahrenheit and Celsius.



Units Button

Touchscreen Calibration

The EasyTouch RV touchscreen is calibrated at the factory to accurately interpret your touch presses. Pressing the Touchscreen Calibrate Button will allow you to recalibrate the touch press area. Follow the on-screen prompts to calibrate the touchscreen. Any overlapping test targets on the second screen is a good calibration.



Touchscreen Calibrate Button

Restart

This setting will turn the thermostat off then on as if removing and restoring power. Tap the Restart button and follow the on-screen prompts to confirm.



Restart Button

Reset All

This setting will reset certain settings in the thermostat back to factory defaults. Zone systems may clear the found zones and initiate a zone scan that takes about 30 seconds to complete. Some thermostats offer options for which settings to reset. Tap the Reset All button and follow the on-screen prompts to choose what you would like to reset.



Reset All Button

Dip Switches

This setting is used to configure your thermostat's operational settings and is slightly different for each EasyTouch RV model. Some simply display how the air conditioner control board is configured that EasyTouch RV communicates with. Others allow for telling EasyTouch RV what appliances it has connected to it. Tap the Switches button to see what configurations are available. See section *Initial Setup Instructions* for details on what must be configured, if any. Micro-Air cannot assist with manipulating and adding more appliances to your system.



Switches Button

Auto-Generator Start (AGS)

This setting allows for a generator to start prior to any appliances that need line voltage to run, then turns it off when the cycle completes. Tap the AGS Enable button to green to enable this behavior or to gray to disable it.



AGS Enable Button

Furnace/Aqua Icons

Most RV systems have auxiliary heat modes in the form of a "forced-air" gas furnace or hydronic heat. EasyTouch RV or the associated control board treats these as the same output and so you can tap the Furnace/Aqua button to toggle between what icons to display for this operational mode. This is simply a cosmetic setting for all EasyTouch RV models except the 350 model, which should be set appropriately.



Furnace/Aqua Button

Schedule Screens

The schedule supports 7 day per week scheduling of events. Events can include changes to the set point or mode of operation for one or more zones. *Figure 3* shows the main schedule screen.

The smart device application also offers a method to copy days. Once a schedule is set for one day, it can be copied to any other day.

(1) Day of the Week

Day of the week is selected from the days along the top of the screen. The day selected appears in white.

(2) Scheduled Events

Events are numbered 1 to 6 along the left side of the display. Tap an event to edit it and advance to the schedule edit screen, shown in *Figure 4*. Tap “more” to see events 4, 5, and 6.

(3) System Time

System time is displayed along the bottom. Tap the time to change from 12-hour to 24-hour time format. A “--:--” is shown when time has yet to be set. See section *Local Weather and Local Time* for setting up the system time.

(4) Back

Tap the back arrow to return to the last screen.

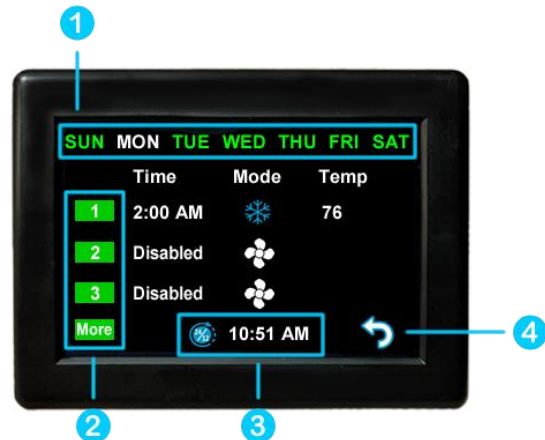


Figure 3 - Main Schedule Screen

Figure 4 shows the edit screen when an event is tapped as shown in (2) *Scheduled Events* on the main schedule screen. The event on the main screen and action time in the edit screen will show disabled until a time is set. Press “Disabled” (1) at the top of the screen to show a gray box around the disabled selection. Use the up and down arrows to make a change. The up and down arrows change to full color once a selection is made. Use the back arrow (2) to save any changes and leave the screen.



Figure 4 - Schedule Edit Screen (Disabled Event)

Figure 5 shows the schedule edit screen once a valid time is set for the event.

1. Set the event time by selecting hours, minutes or AM/PM.
2. Set the desired mode by tapping the mode button.
3. Tap the hours, minutes, AM/PM or the set point to select an editable parameter, then use the red and blue arrow buttons to make a change.
4. Tap the zone number enable/disable the zone you want this event to affect. A green box will draw around zones the event is enabled for. EasyTouch RV models that are not zone controls will not have this feature and will always be enabled when a valid Action Time (1) is used.

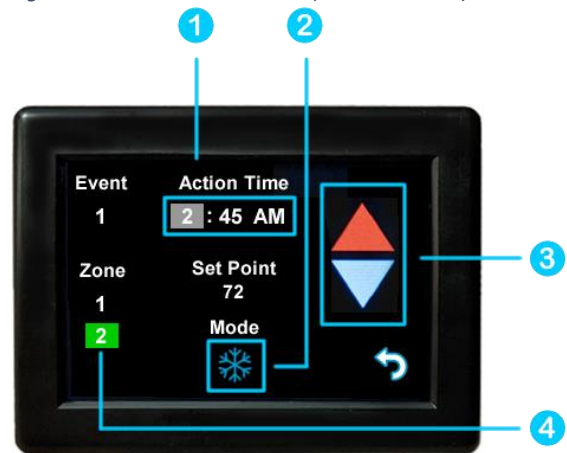


Figure 5 - Schedule Edit Screen (Enabled Event)

Create and Enable a Schedule

- Tap the edit schedule button as described in the *Schedule – Edit, Enable or Disable* section in settings, to enter the main schedule screen, shown by Figure 3.
- Ensure that a valid (3) *System Time* is shown. Tap the day you want to set up a schedule for, then the event you want to edit, all shown by Figure 3. Tapping the event will take you to the edit schedule screen, shown by Figure 5.
- Tap the Action Time, Setpoint and Mode to make edits to what you want your event to do. Tap the zone you want this event to occur in if shown.
- Tap the back button and repeat for any other events and any other days.
- Tap the back button once again to return to the settings screen and this will save your schedule. Activate the schedule by pressing the schedule button with the “Enabled/Disabled” subtext as described in the *Schedule – Edit, Enable or Disable* section in settings. When enabled, it will be noted on the *Main Screen (3) Status Tray*.

Smart-Device Application Features

Restart Thermostat

This Bluetooth only feature allows resetting the display just as if you removed and restored power.

Calibrate Touchscreen

It is normally not necessary to recalibrate the touchscreen. This selection prompts the user to press the four corners of the display then test the calibration using three diagonal marks. This feature is only available from Bluetooth as being at the thermostat is required.

Check for Updates

Checks to see if any updates are available for the thermostat. The smart device application must have internet and the thermostat must be connected to Wi-Fi with a green Wi-Fi symbol. Tap Check for Updates and follow the prompts.

Notifications

Notifications provide a way for the user to monitor the temperature in the space using notification limits. Limits are set by connecting to the thermostat in the app, selecting the settings gear, and then selecting notifications. A minimum and maximum allowed temperature can be set. *Table 10* shows an example of operation with an 80°F maximum temperature set. Notification will be sent for each degree it rises above the maximum temperature. If temperature drops, no notification will be sent unless the temperature exceeds the last maximum temperature again (82 in the example). If the temperature drops two degrees below the set maximum, (78 in the example) it will again alert for each degree above the set maximum. This behavior helps avoid nuisance notifications to your smart device.

Temperature (°F)	Action
80	Send first notification
81	Send another notification
82	Send another notification
81...79	Temperature drops, no notification
78	Max temp resets

Table 10 - Push Notifications Operation Example

Edit Wi-Fi Settings or Connect to Wi-Fi

This is where you will make the connection from the thermostat to the internet. See section *Connecting to a New Wi-Fi Network* for details on how to use this feature. The app must be connected to the thermostat over Bluetooth to see this option.

Appendix A: Working Wirelessly

This thermostat may be operated remotely using either Bluetooth or Wi-Fi. All connectivity is performed through the EasyTouch RV App on a smart-device. The app is downloaded from the Google Play store or Apple App store. The first time the app is opened, it will ask to create an account. Create your account and follow the prompts to connect your thermostat.



EasyTouch RV App icon

Bluetooth is a limited range method to connect, typically used when near the thermostat. The thermostat can be connected to an internet-connected network, where you can then access the thermostat from anywhere you have an internet connection with the app.

If a second user is going to use the thermostat remotely, they **MUST** use the same account and password that the first user assigned to the thermostat. Each thermostat can only be assigned to a single account, but many users can control the thermostat if they use the same account.

First Connection Steps

Note: An internet connection on your smart device is necessary for these steps.

1. EasyTouch RV uses BLE which is a special implementation of Bluetooth. It is not necessary to “Pair” the thermostat with the phone but an account must be created for operation. Ensure that Bluetooth is enabled and that the app has Bluetooth and location services permissions. Android users must also have locations services turned on in general.
2. Start the app on your smart device. The app will open and if you have not entered your account information, it will ask you to create an account and enable permissions. Enter your name, email, and a password at the prompts. The system will send a confirmation email to your inbox. Enter the number in the confirmation email when asked.
3. Once the account is created, the application may ask to add a device. If your thermostat is powered it will show in the list to be added to your account. Select the device and enter a name for it. This name is used to identify and connect to it in the future.
4. If you added a control, the app will ask if you want to connect it to Wi-Fi now. Enter your SSID (network name) and password of the network you want to connect the thermostat to.

Adding a Thermostat to Your Account

Follow the next steps if the account process does not add a control or a second thermostat is to be added.

1. Press the settings gear and “Add Device”.
2. The nearby thermostat(s) should be listed in the new selection window. These are the thermostats heard over Bluetooth. Select the device and enter a name for the device.
3. Press OK and the screen will return to the settings menu (Android) or the selection screen (Apple). Android users should press the back button to get to the selection screen.
4. Select the device name to open the thermostat screen.

Connecting to a New Wi-Fi Network

You can connect to the thermostat from anywhere using the app when the thermostat is connected to an internet source. The internet source **must** be a 2.4GHz network to connect to EasyTouch.

1. Connect to the thermostat in Bluetooth (Apple) and press the settings gear.
2. Select Wi-Fi Setup from the settings window.
3. Connect to a network:
 - a. The SSID (network name) will say “searching” then switch to “select”. Tap “select” to choose from a network the thermostat can hear.
 - i. Alternatively, enter the SSID manually (case sensitive)
 - b. Enter the password (case sensitive).
4. Press OK and the screen will return to the selection screen. The thermostat will reset and a green Wi-Fi symbol will appear on the thermostat screen if the connection was successful.
5. With a green Wi-Fi symbol, you can now connect to the thermostat from anywhere using the app over the internet.

Updating The EasyTouch RV Thermostat

Ensuring you have the latest thermostat software is key to having all the latest features.

1. Ensure the thermostat is connected to Wi-Fi with a green Wi-Fi symbol.
2. Connect to the thermostat and press the settings gear, then tap Check for Updates.
3. Follow the prompts to update the thermostat or ensure that you already have the latest software.

Appendix B: Troubleshooting

The most common problems during installation are not matching the wires correctly or properly mating the wires. The first step should always be to recheck the instructions and make sure the wires are joined and seated properly.

The second most common problem is not knowing the thermostat operation. If the system is running a heating or cooling cycle, the set point will turn red for heating and blue for cooling. When the thermostat turns white, the heat pump, heat strip and furnace should all be off. The fan may continue to run for a while after the cycle completes. If a fan is left in a manual mode, it will not shut off.

Wi-Fi Troubleshooting

No Wi-Fi Icon

- SSID (Network name) and password are both case sensitive.
- Be sure you are connecting to a 2.4 GHz network and not a 5GHz or 6GHz network.
- Set the security to WPA2 and TKIP+AES if you are having trouble.
- The thermostat has a limit of 31 characters for the SSID and 50 for the password.
- Ensure the number of devices limit for the network is not full.
- Ensure the Wi-Fi source is not out of range or metal partitions blocking the signal.
- Try a guest network or mobile hotspot that may have reduced restrictions.
- Reset the router to renew the DHCP lease.
- If you are in a metal enclosure, try moving the router or thermostat a few inches (even if temporary) and trying again.
- If using MAC filtering, add the thermostat to the allowed devices list.
- Try assigning a DHCP reservation to the thermostat MAC address.

Red Wi-Fi Icon

- The router must have an internet connection
- Server may be down, check back at a later time
- Be sure there is no firewall in the router blocking the incoming messages (port 8883, MQTT). Place the thermostat IP into the DMZ settings to bypass any firewalls.

EasyTouch RV Knowledge Bank – More Information

Visit our knowledge bank at http://www.micro-air.com/kb_easytouch_rv.cfm for the latest resources for setup, operation, and troubleshooting, as well as our main website for contacting us for support.