

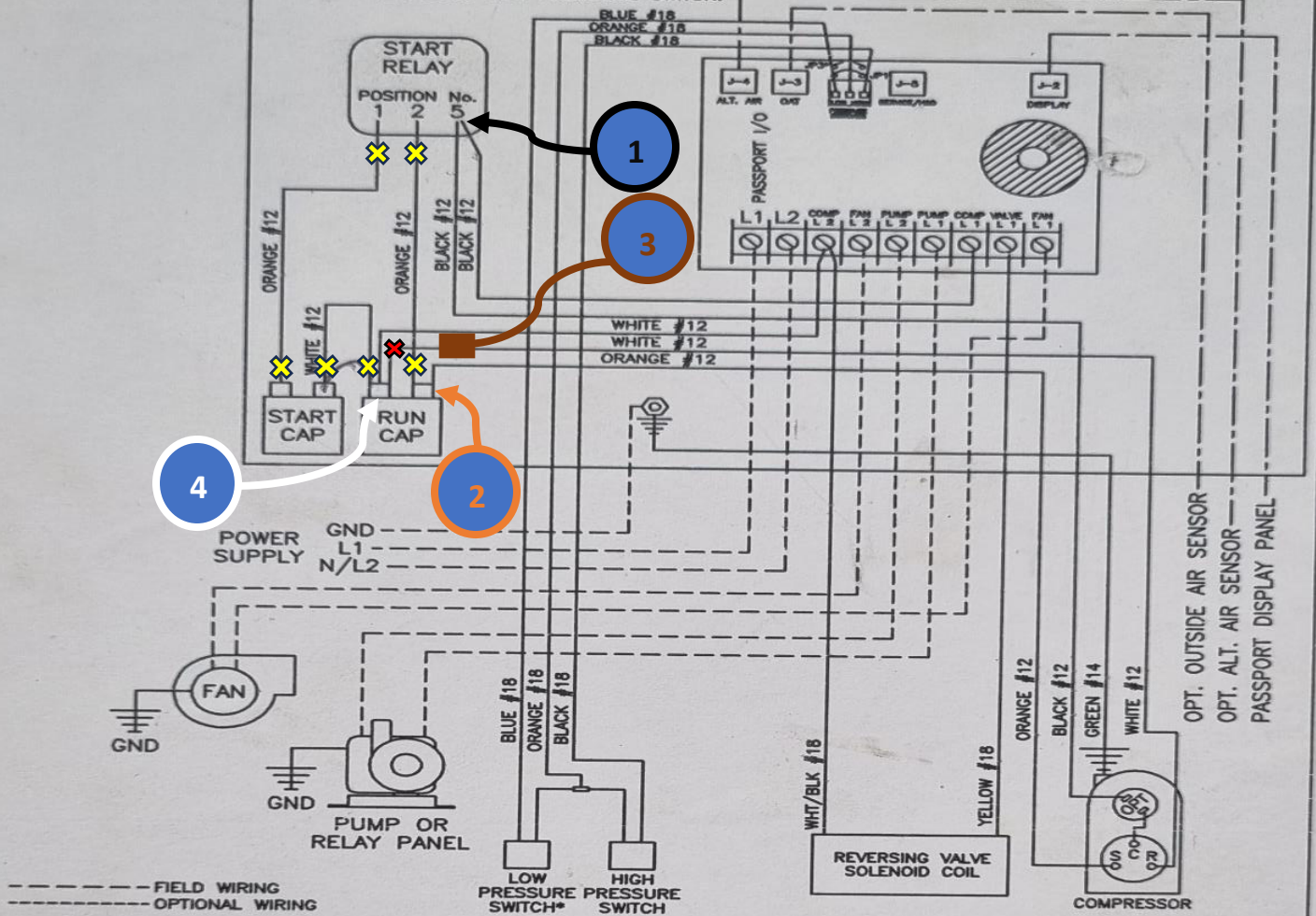
Dometic Emerald Multi-Ton with Passport I/O & Start Relay/Capacitor Easy Start Wiring

PROPRIETARY NOTE: THE INFORMATION CONTAINED WITHIN THIS DOCUMENT IS THE PROPERTY OF DOMETIC CORPORATION. ANY ATTEMPT TO COPY OR DISTRIBUTE WITHOUT WRITTEN CONSENT FROM DOMETIC CORPORATION SHALL BE CONSIDERED UNLAWFUL AND CAN BE CONTESTED IN A COURT OF LAW.

REV	DATE	REVISION DESCRIPTION	DWG	APR
A	5/20/11	REMOVED EXTRA LINES, CAD511-11	DRR	MFG

ELECTRICAL BOX

*NOTE: JUMPER #3 (JP3) MUST BE CUT WHEN USING LOW PRESSURE SWITCH.



Dometic Corporation		Marine Air	
ED24-36KZ(50) MULTI TON WITH PASSPORT I/O			
EMERALD CONDENSER 230VAC/50-60/1Ø			
DATE: 12/17/10	DWG BY: DRR	PART NUMBER: 0880292	DWG
SCALE: NTS	APR BY: DTW	M9510002	REV A

NOTES: First remove the orange & white wires (yellow x's) from the start relay/start cap

1) Make a 3-way connection with the Easy Start Black wire & the two start relay black wires on relay position #5

2) Connect the Easy Start Orange wire with the existing orange wire on the run capacitor

3) Remove the compressor white run wire from the run capacitor & splice it into the Easy Start Brown wire

4) Where you just removed the white wire in the previous step, connect the Easy Start White wire