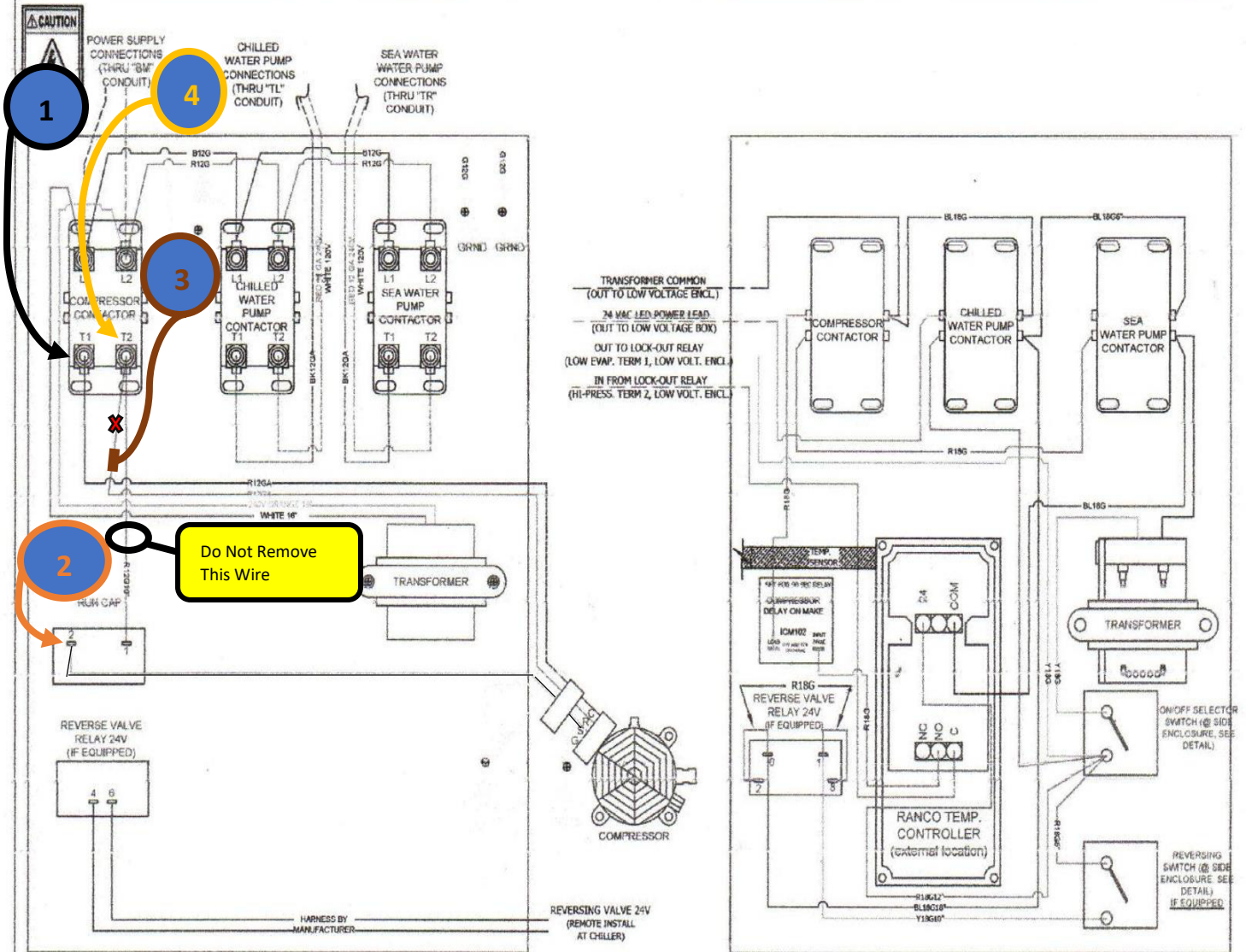


Description: 30032-001
Wiring Diagram, high and low voltage

FM24CW-FM180CW 1-PHASE CHILLER 20DEC17 REV C



©copyright 2017

Manufactured with Pride in the USA
2427 SE Dixie Hwy, Stuart, Florida 34996 - USA
Phone: 772-283-1809 Fax: 772-283-4611
Web: 800-316-6426
www.flagshipmarine.com

- 1) Connect the Easy Start Black wire with the compressor common (C) contactor T1 wire
- 2) Connect the Easy Start Orange wire with the existing compressor start (S) wire on the run cap
- 3) Remove the contactor T2 compressor run (R) wire and splice it into the Easy Start Brown wire
- CAUTION: Do not remove the contactor to run capacitor wire that is on the T2 side**
- 4) Where you just removed the T2 compressor (R) wire in step 3, connect the Easy Start White wire