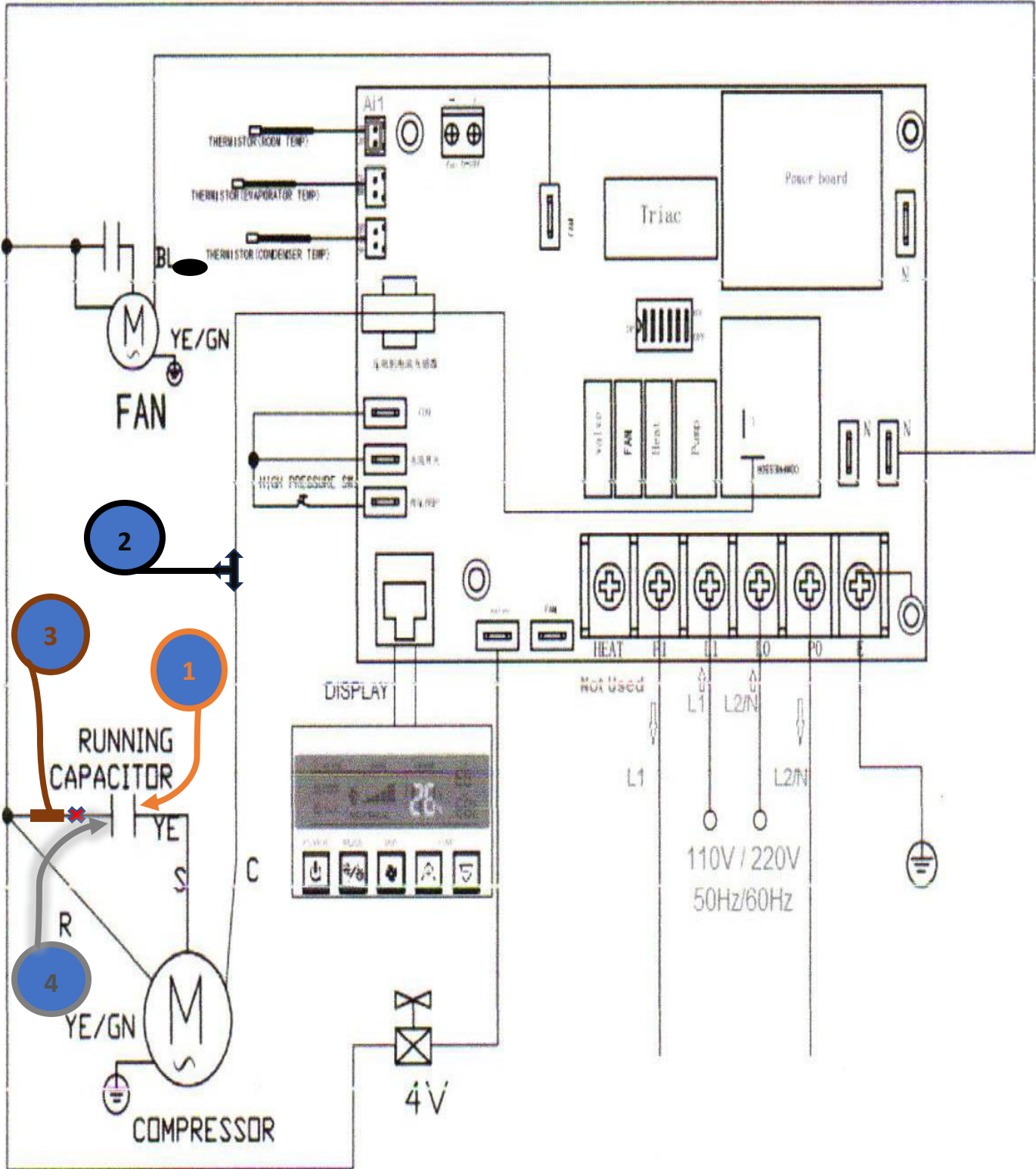


Mabru Marine SC17 with Easy Start



1) Attach the Easy Start Orange wire here with the existing compressor start (S) wire

2) Cut the compressor common (C) wire and make a 3-way splice with the Easy Start Black wire

3) Remove the compressor run (R) wire from the run capacitor and splice into the Easy Start Brown wire

4) Where you just removed the wire in step 3, connect the Easy Start White wire