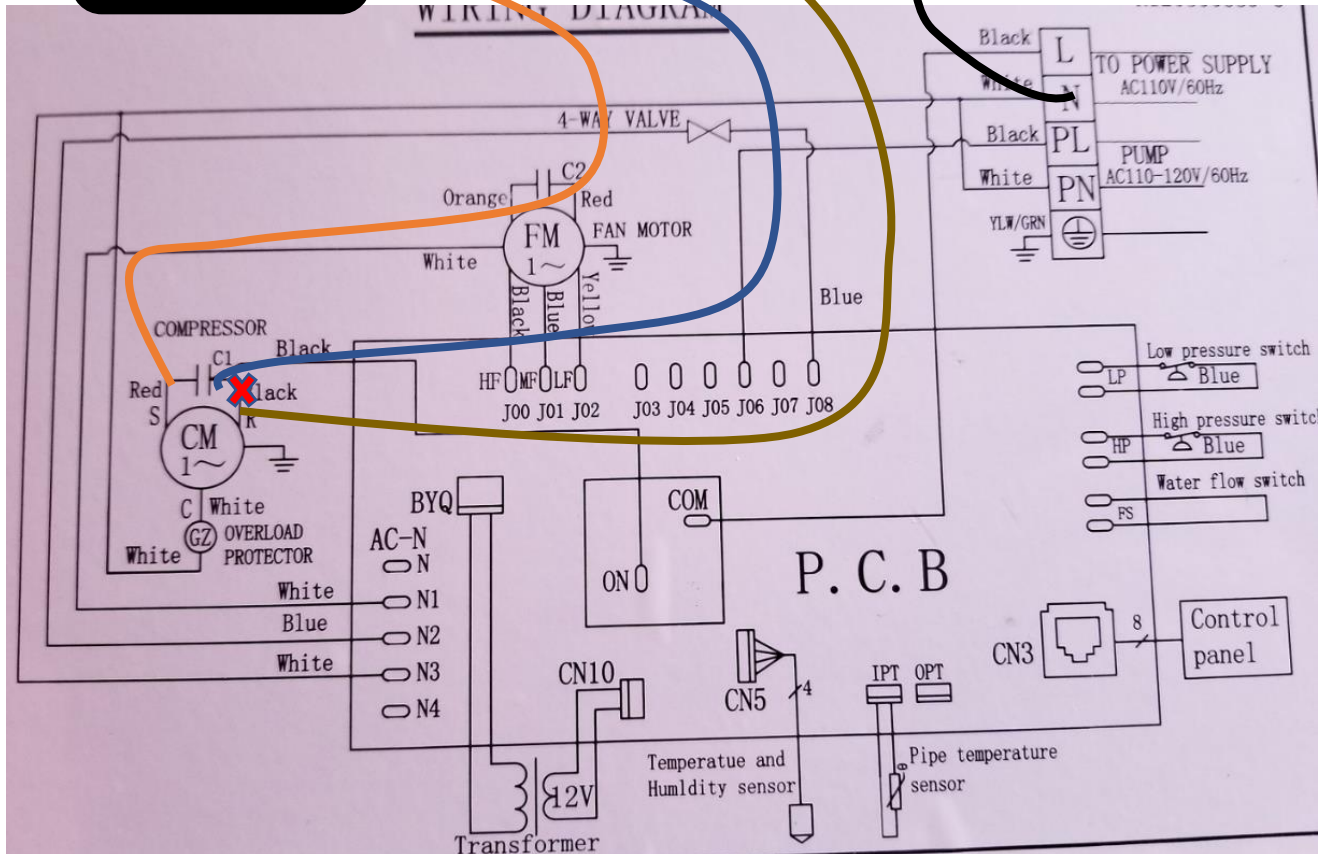


# Marin Aire AC Wiring

(NOT MARINE AIR® OR DOMETIC®)

EasyStart



1. Identify the compressor run capacitor C1. It will be a silver cylinder several inches long with spade connectors on top.
2. There are two black wires on the top of the run capacitor on one terminal group. Identify the wire that does NOT go to the PCB relay and remove it. Cut off the end and connect it to the BROWN wire from EasyStart.
3. Connect the WHITE wire from EasyStart (Shown in BLUE above) to the empty terminal on the run capacitor created in step 2.
4. Connect the orange wire from EasyStart to an empty terminal on the red wire side of the run capacitor.  
NOTE: Some systems may have more than 1 wire on the red wire side. If your system has that configuration, completely remove the wire that does not go to the compressor and discard it.
5. Connect the BLACK wire from EasyStart to the power terminal "N" connection.
6. Do five learning starts on shore (AC MAINS) power. Please note there is a 5-minute timer in EasyStart that will prevent short cycling. The compressor will start after this timer expires.